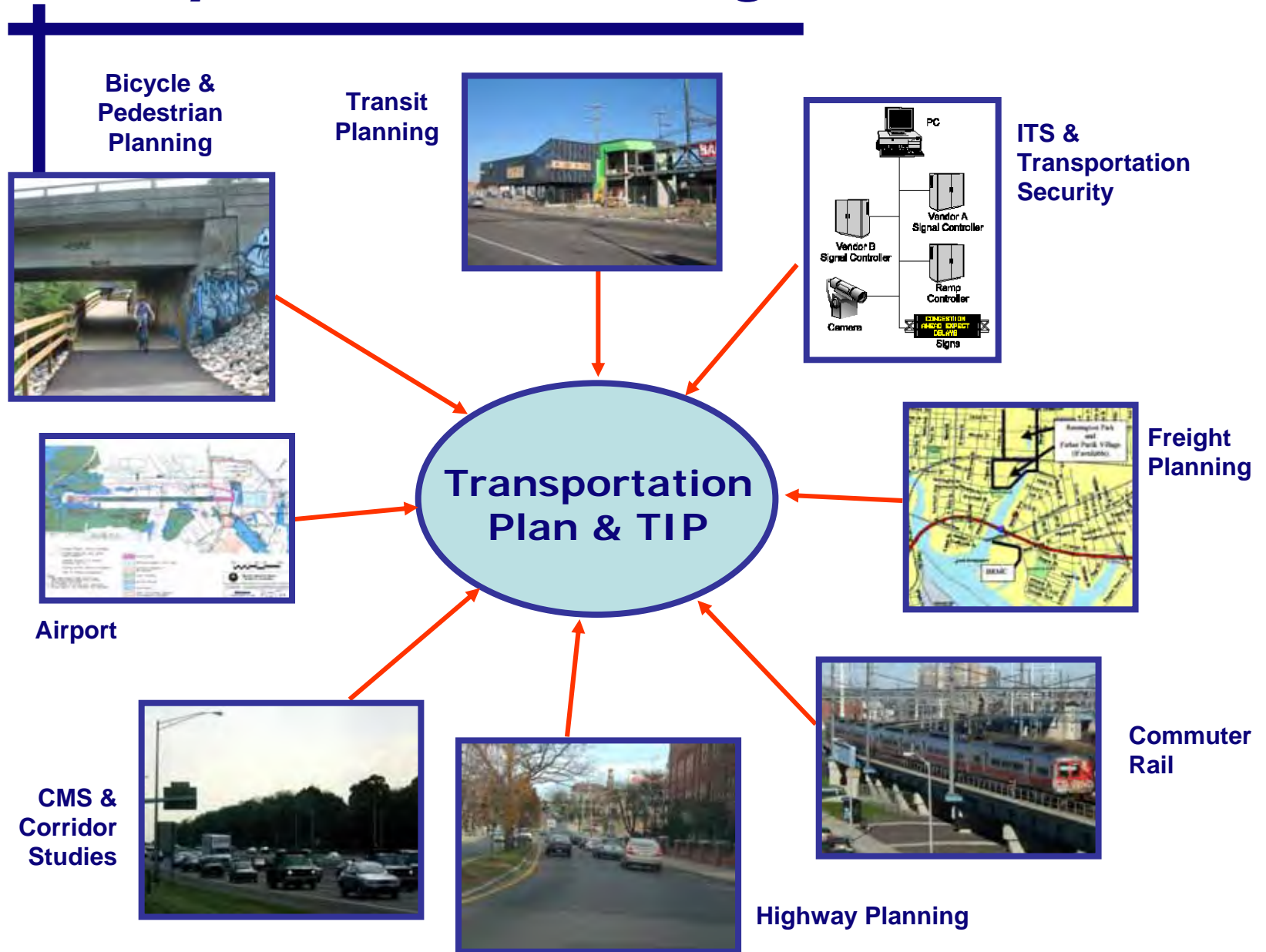
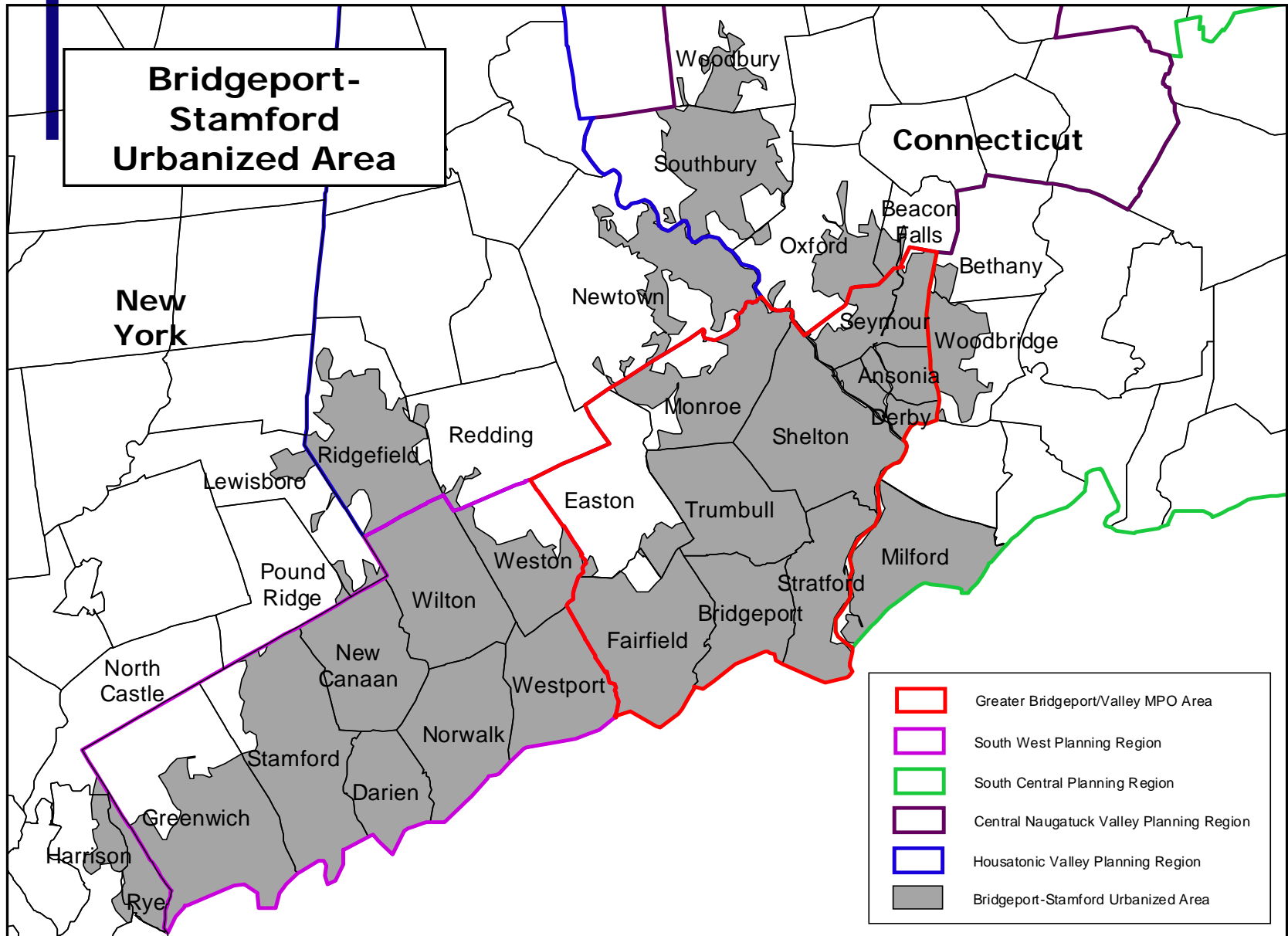


Transportation Planning Process



Greater Bridgeport-Valley MPO Area

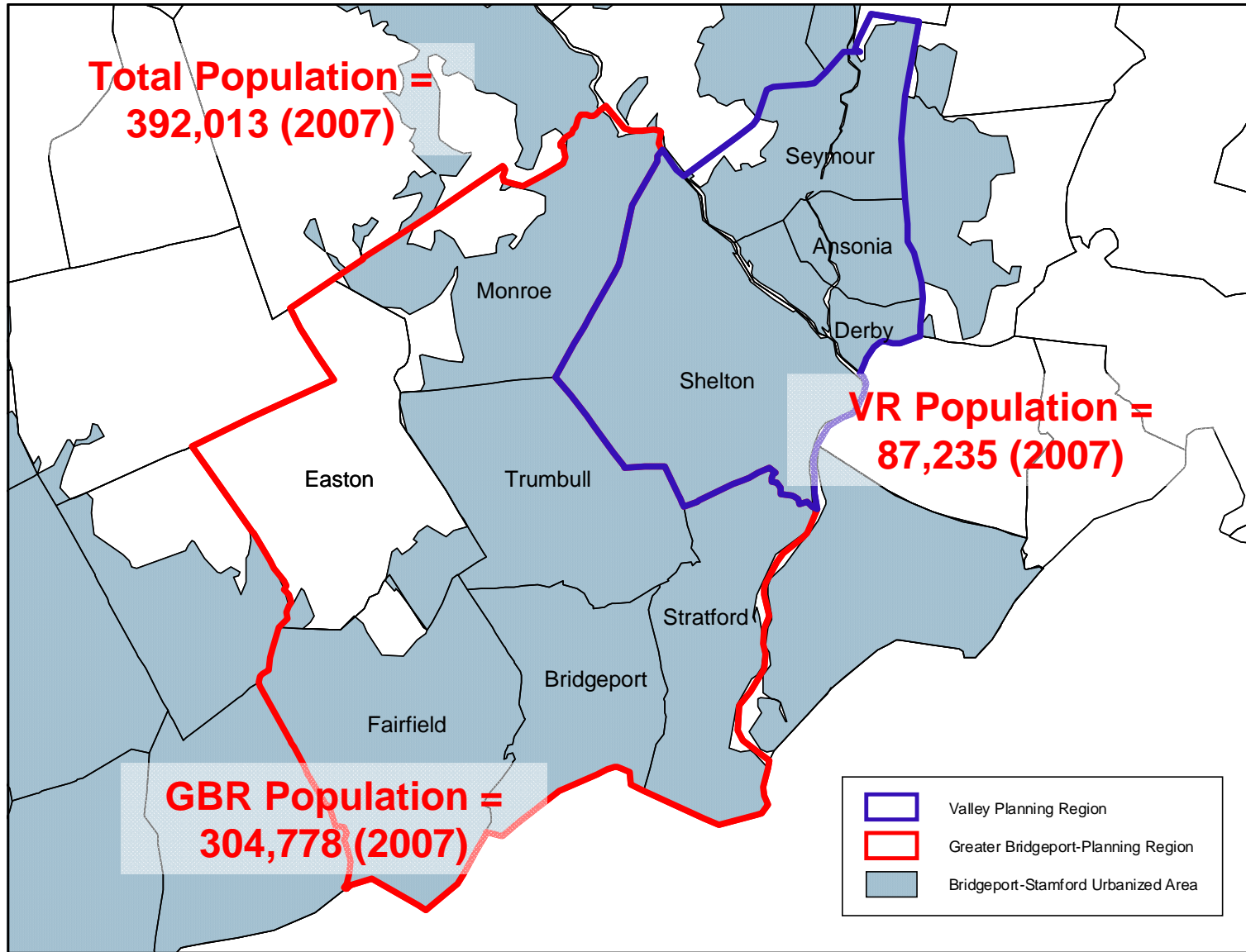
Greater Bridgeport & Valley
Metropolitan Planning Organization...



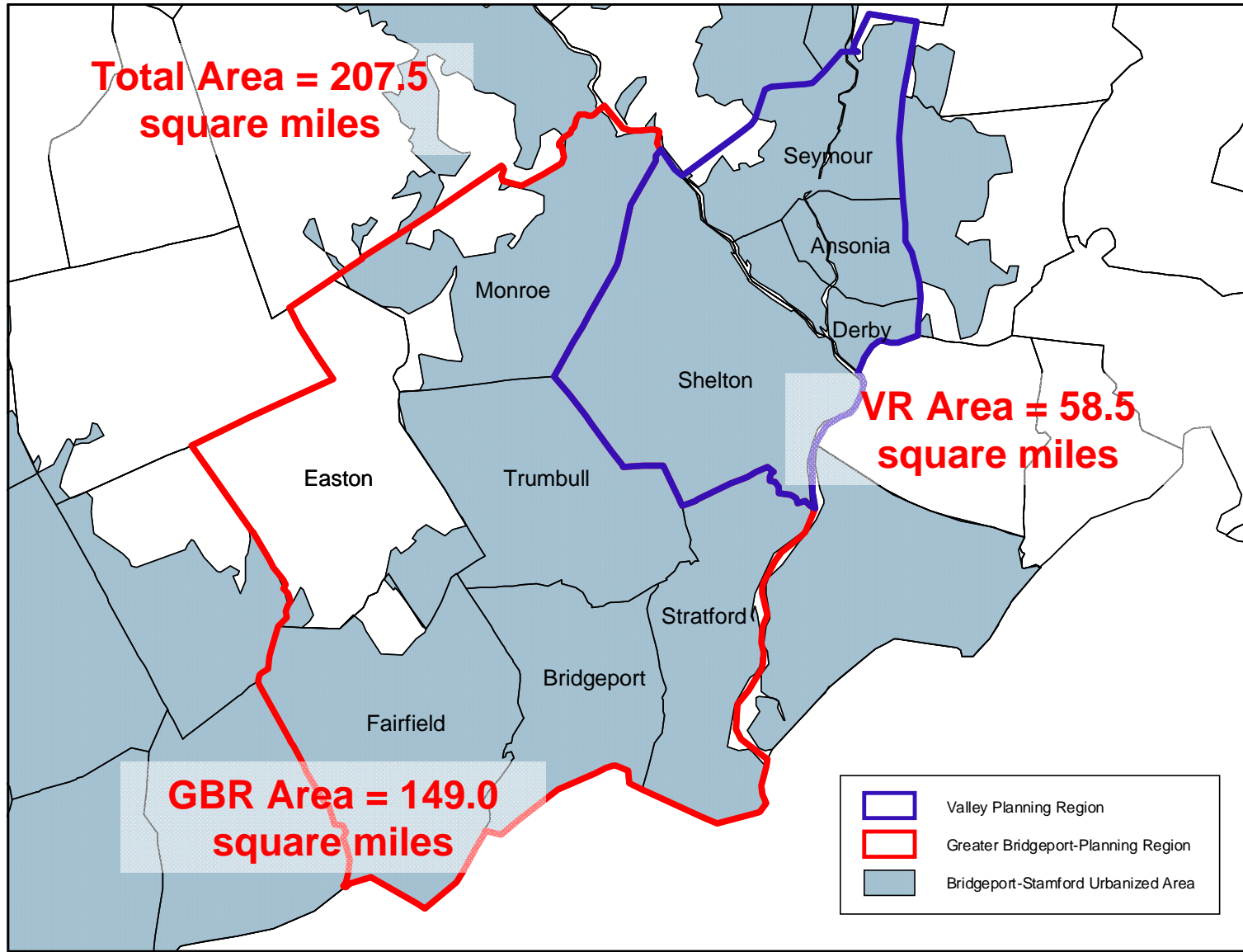
GBVMPO Membership

- 14 Voting members
 - 6 chief elected officials of the Greater Bridgeport Planning Region
 - 4 chief elected officials of the Valley Council of Governments
 - Chairman of Greater Bridgeport Transit
 - Chairman of the Valley Transit District
 - Chairman of the Greater Bridgeport Regional Planning Agency
 - Chairman of the VCOG Regional Planning Commission

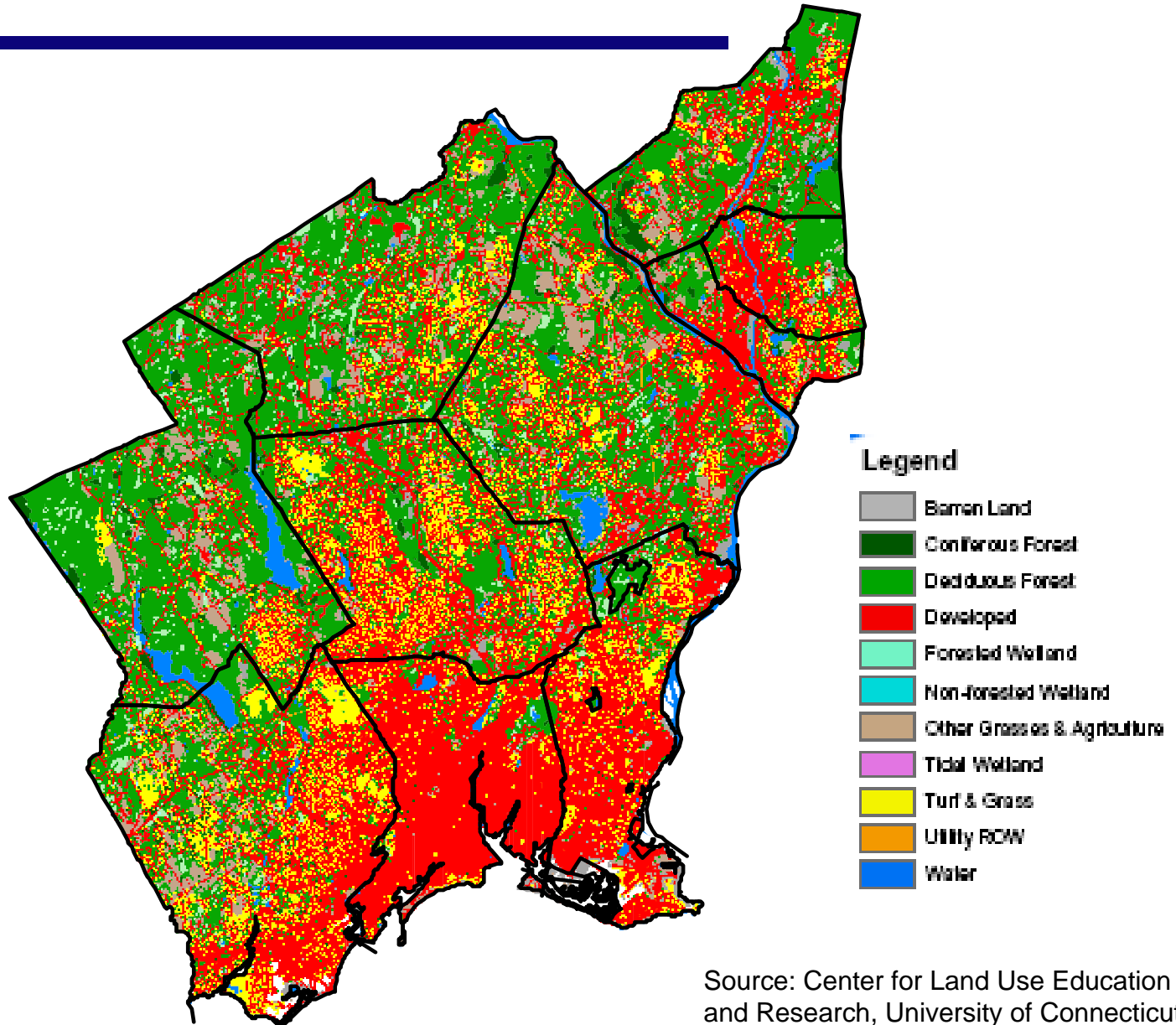
Population – GBVMPO Area



Land Area – GBVMPO Area



Land Cover – GBVMPO Area



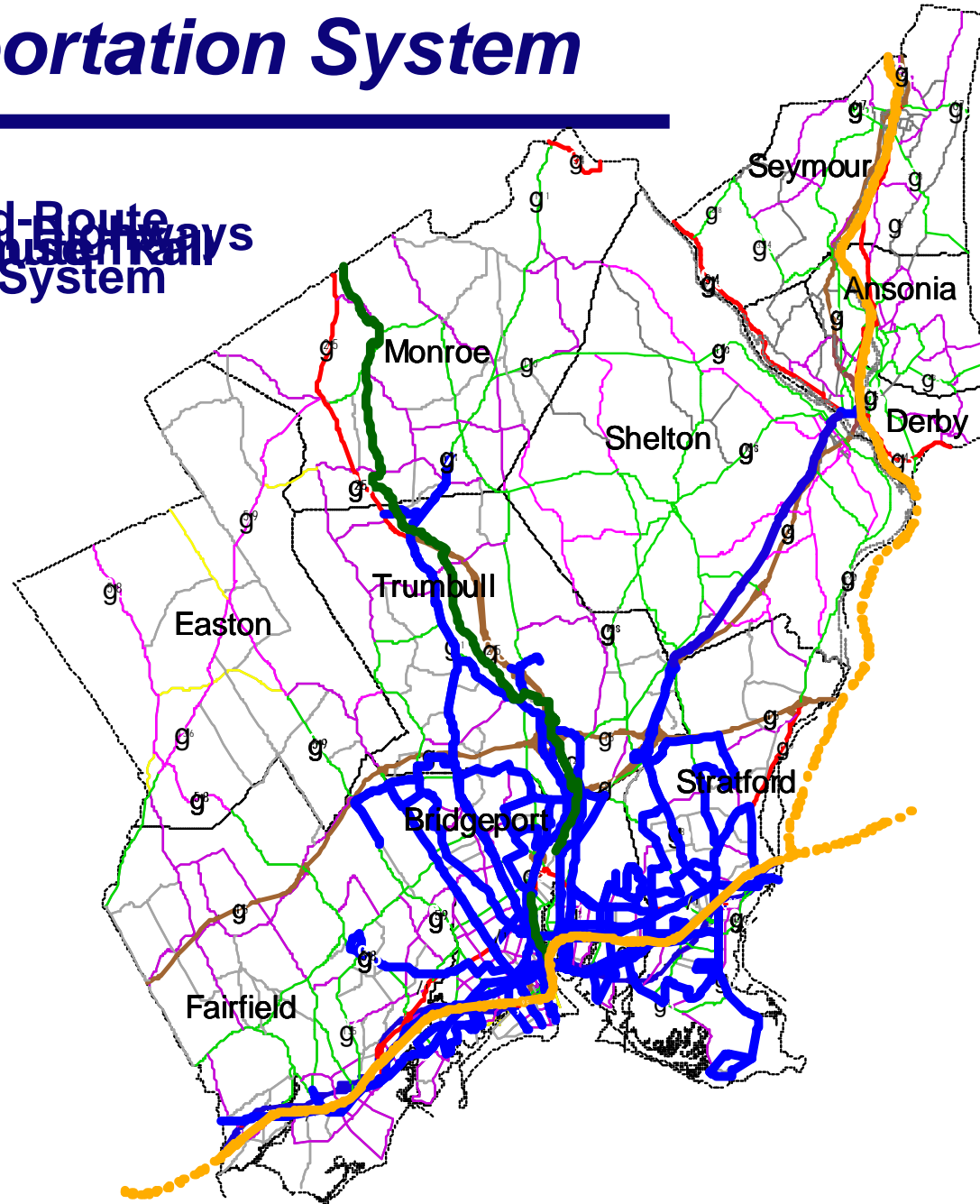
Source: Center for Land Use Education and Research, University of Connecticut

Transportation System

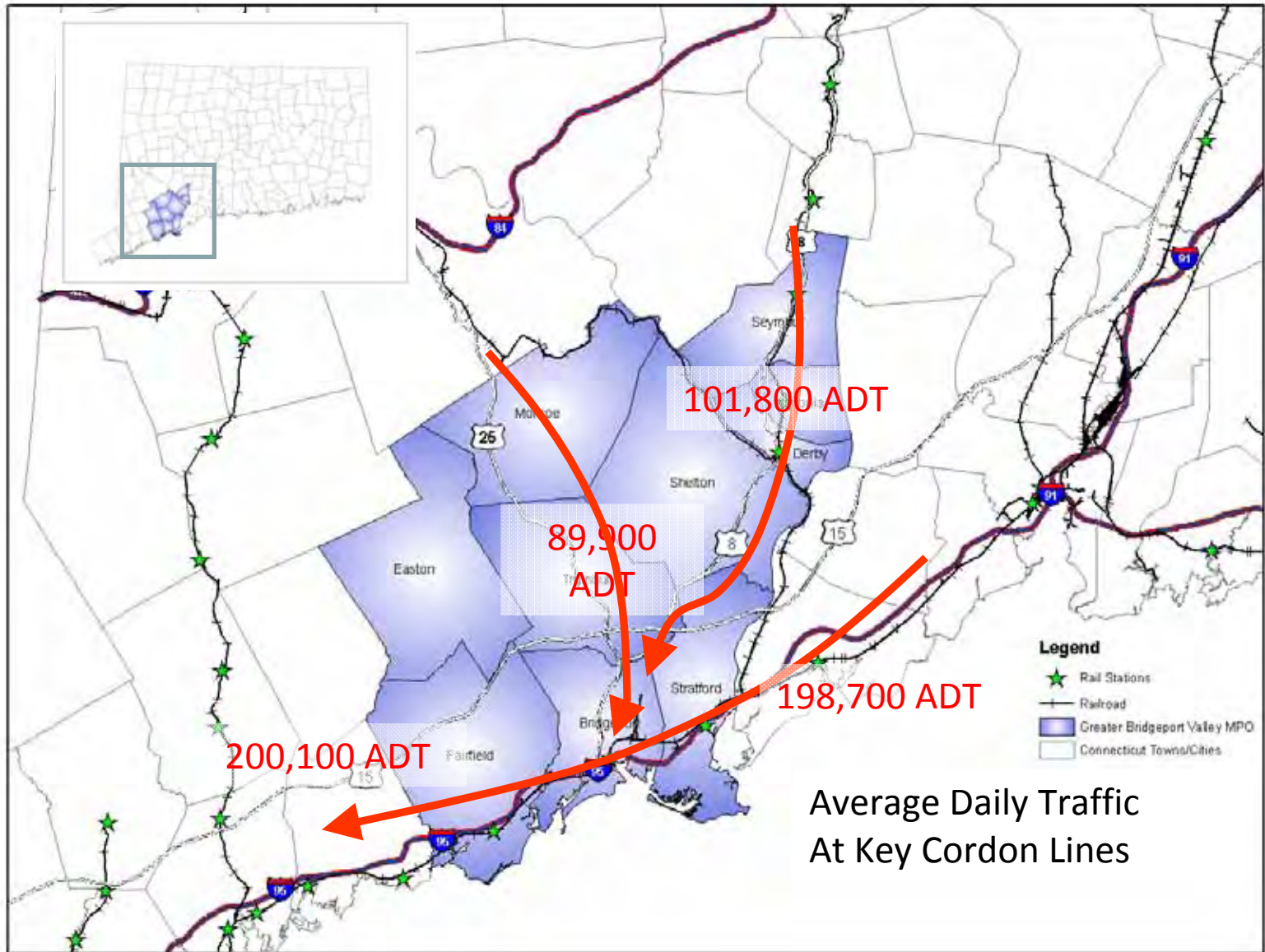
- Fixed-route bus system – Greater Bridgeport Transit & Connecticut Transit (New Haven Division)
- Paratransit services – Valley Transit District & GBT
- Commuter rail – New Haven Main Line & Waterbury Branch Line (Metro North Railroad)
- Expressways – I-95, Route 15, Route 8 & Route 25
- State & local arterials – US Route 1, Route 25, Route 34, Route 58, Route 67, Route 110, Main Street
- Passenger/auto ferry – Port Jefferson Steamship Co
- Regional multi-use trails – Housatonic Railroad Trail & Naugatuck Valley River Trail
- Commercial Port – Bridgeport Harbor
- General Aviation Airport – Sikorsky Memorial Airport

Transportation System

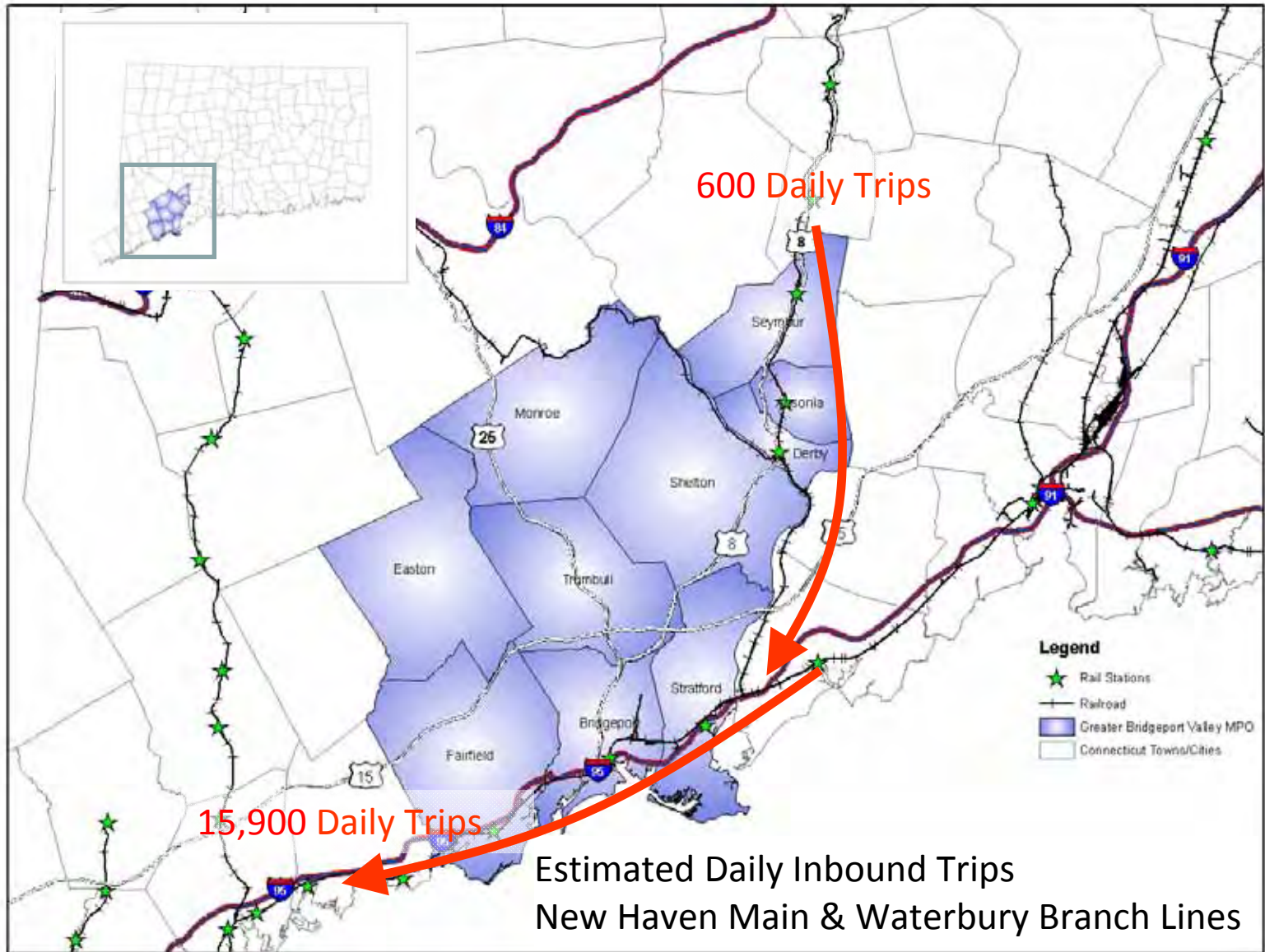
**Fixed-Route
Bus System**



Inter-region Traffic Flows



Commuter Rail Inbound Ridership



Transportation Planning Emphasis Areas

- Transportation Links & Commuter Connections from Valley/Greater Bridgeport to South West – Transit alternatives
- Route 8 Congestion – Commodore Hull Bridge
- I-95 Congestion – Lane Continuity & Interchange Improvements
- Freight & Goods Movement – Short Sea Container Barge Service

Transportation Planning Emphasis Areas

- Waterbury Branch Line Study (CDOT)
- *Intelligent Transportation Systems* – Advanced Traffic Operations, Traveler Information, Transportation Security & Automated Vehicle Location
- Transit Oriented Developments – Route 8 Corridor, Bridgeport East Side
- Congestion Pricing Study (TSB)

Inter-regional Planning Opportunities

- **Commuter Rail:**
 - Coordination & communication regarding major investment projects
 - Interstate rail planning cooperation
 - Advanced traveler information – accurate & timely delay information; next train
- **Multi-use Trail Development & Bicycle Planning**
 - Merritt Parkway Corridor?
 - Inter-regional Facilities?
- **Freight & Goods Movement Planning**